



Stackabl Baer Cluster



DESCRIPTION

Stackabl's Baer collection is a nod to a time and place: America's roaring 1920s, exuberant '40s, and their Art Deco backdrops. In these promising and progressive eras, the decorative art style influenced everything from general household objects to architecture. The movement was about craftsmanship and rich materials, as well as bold geometries, sun-saturated colors, and linear details – all which Miami Beach fully embraced.

This collection, in these cautiously optimistic, post pandemic times, salutes Miami Beach's on-going vitality, which is especially noted in its hospitality landmarks. The pendants can be hung vertically or horizontally and are ideal for contract as well as residential environments. Clusters are available, too, including the show-stopping Baer. The medley of five pendants honors the late Barbara Baer Capitman, the community activist and author who led the effort to preserve Miami Beach's historic art deco district in the 1970s.

CONFIGURED BY MINDY SOLOMON

Miami, FL | 10:37:07 AM | 07.11.2022

THE TROPIC

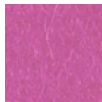
DIMENSIONS

Height: 6"
Diameter: 8"

QTY OF LIGHTS

8" Diameter x 1

PET



Pink

THE MARLIN

DIMENSIONS

Height: 26"
Diameter: 8"

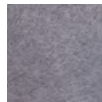
QTY OF LIGHTS

8" Diameter x 2

PET



Orange



Periwinkle

THE LESLIE

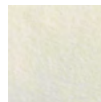
DIMENSIONS

Height: 12"
Diameter: 5"

QTY OF LIGHTS

5" Diameter x 1

FELT



Wollweiß

PET



Lemon

THE PARK CENTRAL

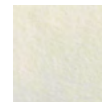
DIMENSIONS

Height: 18"
Diameter: 5"

QTY OF LIGHTS

5" Diameter x 2

FELT



Wollweiß

PET



Periwinkle

THE WALDORF

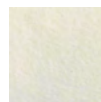
DIMENSIONS

Height: 60"
Diameter: 5"

QTY OF LIGHTS

5" Diameter x 3

FELT



Wollweiß

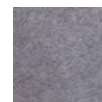
PET



Lemon



Orange



Periwinkle



Salmon

PLATE



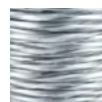
Clear

CANOPY



White

CABLE



Clear

CERTIFICATION

ETL certified (UL equivalency)
Dry indoor use only

POWER

Power supply:

- 12 VDC output Class 2 constant voltage integral power supply
- Integral power supply in Standard Canopy can support up to 10 light discs
- Integral power supply in Multi-fixture Canopy can support up to 25 light discs
- Remote drive options upon request
- Casambi, DALI, Luton Compatible

Controls:

120/227 V input, TRIAC, ELV, 0-10 dimming

Input voltage:

120 VAC (277 VAC upon request)

Lamping:

3.7 W per 5" light disc / 7.4 W per 8" light disc, CRI 90, L80 50,000 hours

Lumens delivered:

350 lm per 5" light disc / 585 lm per 8" light disc

LIGHT DISC TEMP

2200 K / 2700 K / 3000 K / 3500 K

ACOUSTICS

Felt NRC: 0.2 / PET NRC: 0.3
Sound Absorption (sabins): 4

MAINTENANCE

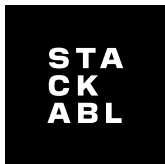
Lint roll occasionally to remove general air-borne debris. Should soiling occur, spot clean with mild soap and lukewarm water. Avoid aggressive rubbing as this can continue the felting process and change the surface appearance of the felt.

PRODUCTION LEAD TIME

6-10 weeks

ASSEMBLED IN TORONTO, CANADA

Please note that our remnants are sourced from different lots, and color variations may occur



Cardozo Cluster



DESCRIPTION

Stackabl’s Baer collection is a nod to a time and place: America’s roaring 1920s, exuberant ‘40s, and their Art Deco backdrops – the details of which Miami Beach fully embraced. This collection, in these cautiously optimistic, post pandemic times, salutes Miami Beach’s on-going vitality, which is especially noted in its hospitality landmarks. The Cardozo pendants celebrate the namesake 1939 hotel with bold blocks of 60 percent recycled lilac and orange PET board, light pale blue Merino wool offcuts, and an intermittent pattern of recessed LED lights. Hung vertically or horizontally, the fixture is ideal for contract as well as residential environments.

CONFIGURED BY MINDY SOLOMON

Cardozo 1 | Miami, FL | 01:20:21 PM | 07.10.2022
 Cardozo 2 | Miami, FL | 12:47:43 PM | 07.13.2022

CARDOZO 1

DIMENSIONS

Length: 25.75”
 Diameter: 8”

QTY OF LIGHTS

8” Diameter x 1
 5” Diameter x 2

FELT



Gletscher

PET



Lilac Orange

PLATE



Clear

CANOPY



White

CABLE



Blue

CARDOZO 2

DIMENSIONS

Length: 25.75”
 Diameter: 8”

QTY OF LIGHTS

8” Diameter x 1
 5” Diameter x 2

FELT



Gletscher

PET



Pink

PLATE



Clear

CANOPY



White

CABLE



Blue

CERTIFICATION

ETL certified (UL equivalency)
 Dry indoor use only

POWER

Power supply:

- 12 VDC output Class 2 constant voltage integral power supply
- Integral power supply in Standard Canopy can support up to 10 light discs
- Integral power supply in Multi-fixture Canopy can support up to 25 light discs
- Remote drive options upon request
- Casambi, DALI, Lutron Compatible

Controls:

120/227 V input, TRIAC, ELV, 0-10 dimming

Input voltage:

120 VAC (277 VAC upon request)

Lamping:

3.7 W per 5” light disc / 7.4 W per 8” light disc, CRI 90, L80 50,000 hours

Lumens delivered:

350 lm per 5” light disc / 585 lm per 8” light disc

LIGHT DISC TEMP

2200 K / 2700 K / 3000 K / 3500 K

ACOUSTICS

Felt NRC: 0.2 / PET NRC: 0.3
 Sound Absorption (sabins): 1.8

MAINTENANCE

Lint roll occasionally to remove general air-borne debris. Should soiling occur, spot clean with mild soap and lukewarm water. Avoid aggressive rubbing as this can continue the felting process and change the surface appearance of the felt.

PRODUCTION LEAD TIME

6-10 weeks

ASSEMBLED IN TORONTO, CANADA

Please note that our remnants are sourced from different lots, and color variations may occur

Colony Cluster



DESCRIPTION

Stackabl's second pendant collection is a nod to a time and place: America's roaring 1920s, exuberant '40s, and their Art Deco backdrops – the details of which Miami Beach fully embraced. This collection, in these cautiously optimistic, post pandemic times, salutes Miami Beach's on-going vitality, which is especially noted in its hospitality landmarks. The Colony pendant celebrates the namesake 1947 hotel with bold blocks of 60 percent recycled salmon PET board, white Merino wool offcuts, and an intermittent pattern of recessed LED lights. Hung vertically or horizontally, the fixture is ideal for contract as well as residential environments.

CONFIGURED BY MINDY SOLOMON

Miami, FL | 04:42:23 PM | 07.11.2022

THE COLONY

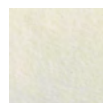
DIMENSIONS

Length: 16.5"
Diameter: 8"

QTY OF LIGHTS

8" Diameter x 2

FELT



Wollweiß

PET



Salmon

PLATE



Champagne

CANOPY



White

CABLE



Off-white

CERTIFICATION

ETL certified (UL equivalency)
Dry indoor use only

POWER

Power supply:

- 12 VDC output Class 2 constant voltage integral power supply
- Integral power supply in Standard Canopy can support up to 10 light discs
- Integral power supply in Multi-fixture Canopy can support up to 25 light discs
- Remote drive options upon request
- Casambi, DALI, Lutron Compatible

Controls:

120/227 V input, TRIAC, ELV, 0-10 dimming

Input voltage:

120 VAC (277 VAC upon request)

Lamping:

7.4 W per 8" light disc, CRI 90,
L80 50,000 hours

Lumens delivered:

585 lm per 8" light disc

LIGHT DISC TEMP

2200 K/2700 K/3000 K/3500 K

ACOUSTICS

Felt NRC: 0.2/PET NRC: 0.3
Sound Absorption (sabins): 1.12

MAINTENANCE

Lint roll occasionally to remove general air-borne debris. Should soiling occur, spot clean with mild soap and lukewarm water. Avoid aggressive rubbing as this can continue the felting process and change the surface appearance of the felt.

PRODUCTION LEAD TIME

6-10 weeks

ASSEMBLED IN TORONTO, CANADA

Please note that our remnants are sourced from different lots, and color variations may occur



⌘ Baer Armchair

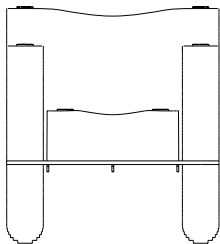
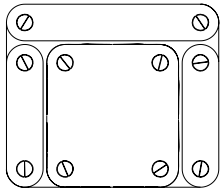


DESCRIPTION

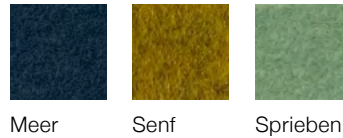
The Baer Collection of furnishings – including an armchair, bench, chaise, and coffee table – nods to a specific time and place: America’s roaring 1920s, exuberant ‘40s, and their Art Deco backdrops. The collection honors the late Barbara Baer Capitman, the community activist and author who led the 1970s effort to preserve Miami Beach’s historic Art Deco district. These sustainable furnishings are made from post-consumer aluminum, 60% recycled PET, and acoustic-dampening Merino wool felt remnants rescued from the textile waste stream. With bold geometries, sun-saturated colors, and linear details, the furniture is suited to both residential and commercial environments and can be easily color customized. Join us in our mission to divert 500 tons of textile waste from landfills by 2029.

DIMENSIONS

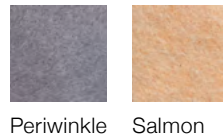
32" H x 29" W x 25" D



FELT



PET



METAL



MATERIALS

- 100% upcycled felted Merino wool
- Recycled PET
- Post-consumer scrap aluminum

MAINTENANCE

Lint roll occasionally to remove general airborne debris. Should soiling occur, spot clean with mild soap and lukewarm water. Avoid aggressive rubbing as this can continue the felting process and change the surface appearance of the felt.

ACOUSTICS

Felt NRC: 0.2
 PET NRC: 0.3

PRODUCTION LEAD TIME

12-14 weeks



Baer Bench

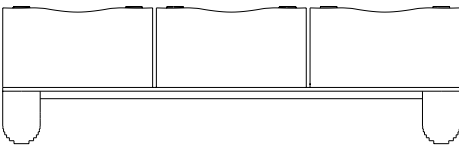
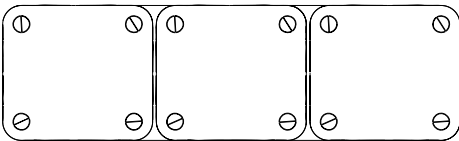


DESCRIPTION

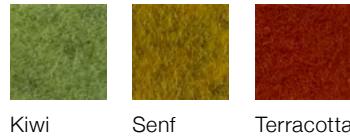
The Baer Collection of furnishings – including an armchair, bench, chaise, and coffee table – nods to a specific time and place: America’s roaring 1920s, exuberant ‘40s, and their Art Deco backdrops. The collection honors the late Barbara Baer Capitman, the community activist and author who led the 1970s effort to preserve Miami Beach’s historic Art Deco district. These sustainable furnishings are made from post-consumer aluminum, 60% recycled PET, and acoustic-dampening Merino wool felt remnants rescued from the textile waste stream. With bold geometries, sun-saturated colors, and linear details, the furniture is suited to both residential and commercial environments and can be easily color customized. Join us in our mission to divert 500 tons of textile waste from landfills by 2029.

DIMENSIONS

Full 3 bay
18” H x 61” W x 18” D



FELT



PET



METAL



MATERIALS

- 100% upcycled felted Merino wool
- Recycled PET
- Post-consumer scrap aluminum

MAINTENANCE

Lint roll occasionally to remove general airborne debris. Should soiling occur, spot clean with mild soap and lukewarm water. Avoid aggressive rubbing as this can continue the felting process and change the surface appearance of the felt.

ACOUSTICS

Felt NRC: 0.2
PET NRC: 0.3

PRODUCTION LEAD TIME

12-14 weeks



Stackabl Baer Chaise

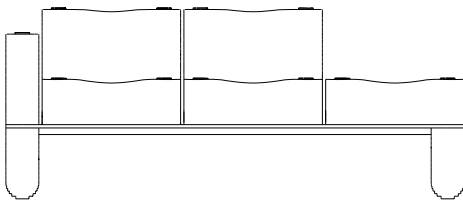
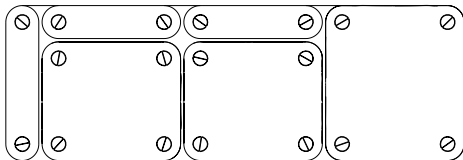


DESCRIPTION

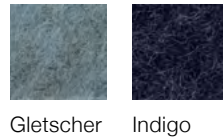
The Baer Collection of furnishings – including an armchair, bench, chaise, and coffee table – nods to a specific time and place: America’s roaring 1920s, exuberant ‘40s, and their Art Deco backdrops. The collection honors the late Barbara Baer Capitman, the community activist and author who led the 1970s effort to preserve Miami Beach’s historic Art Deco district. These sustainable furnishings are made from post-consumer aluminum, 60% recycled PET, and acoustic-dampening Merino wool felt remnants rescued from the textile waste stream. With bold geometries, sun-saturated colors, and linear details, the furniture is suited to both residential and commercial environments and can be easily color customized. Join us in our mission to divert 500 tons of textile waste from landfills by 2029.

DIMENSIONS

Half 3 bay
29" H x 69.5" W x 23.5" D



FELT



PET



METAL



MATERIALS

- 100% upcycled felted Merino wool
- Recycled PET
- Post-consumer scrap aluminum

MAINTENANCE

Lint roll occasionally to remove general airborne debris. Should soiling occur, spot clean with mild soap and lukewarm water. Avoid aggressive rubbing as this can continue the felting process and change the surface appearance of the felt.

ACOUSTICS

Felt NRC: 0.2
PET NRC: 0.3

PRODUCTION LEAD TIME

12-14 weeks